

STAINLESS STEEL EXHAUST TIPS

All Vibrant exhaust tips are made of T304 Stainless Steel for optimum corrosion resistance and then go through a three stage polishing process for a brilliant, mirror-like finish.

ROUND EXHAUST TIPS (WELD-ON)



Style: Double Wall, Angle Cut, Rolled

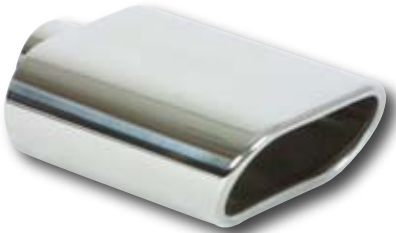
Part No.	Outlet	Inlet I.D.	Length
1303	4"	2.25"	7.75"
1304	3.5"	2.25"	7.5"
1305	3"	2"	6.5"



Style: Double Wall, Angle Cut, Beveled

Part No.	Outlet	Inlet I.D.	Length
1207	4"	2.25"	7.75"
1226	3.5"	2.25"	7.5"
1209	3"	2"	6.5"

OVAL EXHAUST TIPS (WELD-ON)



Style: Single Wall, Angle Cut, Rolled

Part No.	Outlet	Inlet I.D.	Length
1405	5.5" x 3"	2.25"	7.75"



Style: Single Wall, Angle Cut, Rolled

Part No.	Outlet	Inlet I.D.	Length
1406	4.5" x 3"	2.5"	7.75"

DUAL OUTLET EXHAUST TIPS (WELD-ON)



Dual Round

Style: Single Wall, Angle Cut

Part No.	Outlet	Inlet I.D.	Length
1333	3.5"	2.5"	10"



Dual Round

Style: Single Wall, Angle Cut, Rolled

Part No.	Outlet	Inlet I.D.	Length
1329	3.5"	2.25"	10"



Dual Round

Style: Double Wall, Straight Cut, Beveled

Part No.	Outlet	Inlet I.D.	Length
1331	3.5"	2.25"	10"



Dual Oval

Style: Single Wall, Angle Cut, Rolled

Part No.	Outlet	Inlet I.D.	Length
1335	3.25" x 2.25"	2.25"	10"